



CashConcepts CCE 3200



Sie können das Handbuch auf www.cce.tm im Bereich FAQ in verschiedenen Sprachen kostenlos downloaden.

You can download the manual on www.cce.tm under the topic FAQ in different languages for free.

U kunt deze handleiding ook in andere talen vinden op onze website www.cce.tm bij het onderwerp "FAQ" en gratis downloaden.

Käyttöohje on ladattavissa ilmaiseksi eri kielillä osoitteessa www.cce.tm kohdasta FAQ.

Vous pouvez télécharger en plusieurs langues le manuel gratuit à l'adresse www.cce.tm dans la rubrique FAQ.

Μπορείτε να κατεβάσετε το εγχειρίδιο δωρεάν και σε διάφορες γλώσσες από τη διεύθυνση www.cce.tm, από την καρτέλα FAQ.

Návod v rozličných jazykoch si môžete bezplatne prevziať na webovej stránke www.cce.tm v často kladených otázkach.

Priročnik v več jeziki lahko brezplačno prenesete s strani www.cce.tm na povezavi FAQ.

Se puede descargar el manual en www.cce.tm bajo el tema de preguntas más frecuentes (FAQ) en distintos idiomas de forma gratuita.



Introduction

Many thanks that you have decided on the CCE 3200. This machine is designed for high amounts of money and different currencies and is therefore optimal for banks, money exchange offices and shops suitable that accept multiple currencies as payment. The CCE 3200 fits also in the office area for all supermarkets and retail dealers where bigger cash amounts all at once have to be counted.

The easy use and the clear display makes it easy to work with the machine after for a short training phase without time-consuming installation and presentations.

Should you have questions to the CCE 3200 banknote counting machine, we are available to you with pleasure.

Your Team of CashConcepts

Warning

General

- Please pay attention that no foreign objects (e.g., coins, paper clips) fall in the machine, these can block the engines and the sensitive sensors of the machine and damage or destroy them.
- Please note that during the countable process no ties, hair or clothes in the bank note are drawn in to avoid injuries and damages to the machine.
- Please pay attention that none stuck, washed, strongly dirty or damaged banknotes is counted in the machine, these can hook up in the machine and tear.

Electricity supply

- Use the device only with the provided net part.
- Use no damaged or humid net parts or power supply lines.
- Connect the stream supply not with humid hands.
- During the change of the fuse the machine must be completely separated from the stream net to avoid an electric blow.

Servicing

- Always switch the power off during cleaning.
- Clean the machine with a dry cloth.
- Do not use wet or damp cloth or cleaning products.
- Do not spill any liquid or spray chemicals over the equipment.
- If any liquid is spilled on it, disconnect the power cable from the supply and contact your dealer.



Representation

Nr.	Description	Photo
1	Feeder	
2	Handle	
3	Adjustment screw for banknote pressure	
4	Feeder sensor	
5	Display	
6	Panel (see below)	
7	Stacker wheels	
8	Stacker / Stacker sensor	

9	Handle	
10	Button to open the rear flap	
11	SD card slot for updating the device	
12	RS 232 for optional external display	
13	RJ 11 port for optional thermo printer	
14	USB for PC connection	
15	Power connection	
16	Fuse	
17	ON / OFF switch	

CUR	Selection of the programmed currency and the Free Count Mode	
Mode	Changing between counting modes (Sort / Mix)	
Serial	ON / OFF serial number reading	
ADD	ON / OFF add function	
Speed	Selection of counting speed	
Report	Display report of counting result (short press)	
Print	Printing counting result (long press)	
Setup	Open / Leave setup menu	
↑↓	Selection in setup menu	
BAT	Selection of the programmed batch stops	
+1/+10	Select individual batch stop	
CLR	Clear counting result and batch stop	
Restart	Start and Stop the counting	



How to use the CCE 3200

Please follow the below tips for using the machine to receive an optimum counting results.

- Connect the net plug with the outlet.
- Connect now the net cable with CCE 3200 and switch on the machine on the reverse side of the machine.
- Choose the currency and the counting mode you want to use.
- Push the banknotes on a straight surface, so that the notes are terse on one length side and insert the banknotes with the straight side to the rear. Now the banknotes can be drawn in optimal. Should the banknotes not be inserted correctly, it can come to false counting or non-recognition of the notes.
- If a banknote is detected as suspicious, the machine stops the counting process. The suspicious banknote is the uppermost banknote of the staple. Please remove the banknote and recount it separately. By pressing "Restart" you can continue the counting process.
- This machine is also optional available as a version where the suspicious banknote will stay in the stacker wheels and can be taken out easily. The version fulfills the rules of ECB for units under the topic "Staff-operated machines".

Counting modes and currency selection

The CCE 3200 can count and check sorted and mixed banknotes (depending on the currency). By pressing the button "Mode" you can toggle between the different counting modes. By pressing the button "Mode/Value" shortly you change the preselected denomination for value counting. By pressing the „CUR" button you can choose the currency you want to count, the Free-Count-Mode is chosen also by the "CUR" button.

- **Euro - Value counting / mixed banknotes (EUR-MIX)**

In this countable mode you can count unsorted and sorted bank notes related to value and evaluate the result about the report menu. By pressure of the key "Report/Print" you can have a clear overview how many banknotes from each denomination that was counted. The report shows you the sum of each denomination and the total sum of all banknotes. By keeping "Report/Print" pressed for around 2 seconds, you can transfer the counting result also to an optional printer.

- **Euro – sorted counting (EUR - SORT)**

In this countable mode the machine stops, as soon as a note is recognized which deviates from the value of the first counted note from the stack. You can search thus larger amounts of the same banknotes particularly for lower values and count the total quantity of the banknotes.

- **Free-Count-Modus (EUR-COUNT)**

Im Free-Count-Modus wird die Falschgeldererkennung deaktiviert und es können alle Sorten von Papieren gezählt werden, die von der Abmessung und Papierstärke her von der CCE 3200 verarbeitet werden können.



- **Serial number reading**

The readout function of the serial number can also be turned on additional to the selected counting mode. After pressing the "Serial" button "SN" is displayed in the left lower area of the display. To read out the serial numbers all banknotes must be sorted before counting. For Euro all faces (front side) must be on the bottom of the banknote stack when it is inserted into the machine. Only in this direction with face down, the serial number can be read. To print out the serial numbers, hold the button "Report / Print" pressed for around 2 seconds.

Setting and function

- **Addition**

The CCE 3200 has a function to count and add the result of several banknote stacks. Press the "ADD" button to turn this function ON or OFF. The display shows the active function by ADD in the lower display area. If more than 9,999 banknotes are counted or the total value of 999,999 exceed, the counter is reset to 0.

- **Batch / Counting stop**

The CCE 3200 offers the possibility to use preset batch values. You can choose this values by pressing the „BAT“ button (100 / 50 / 20 / 10 / OFF). By pressing the buttons "+1/+10" you can increase the values to an individual counting stop. If the set batch value is reached, the machine stops the counting until you remove the counted banknotes from the stacker. The counting process can be continued by pressing the "Restart" button. The CCE 3200 now counts as long as again the batch value is reached or there are no more banknotes in the feeder of the machine. By pressing the button "Clear" you erase the counting result and also the batch value. The chosen batch value is displayed in the lower display area (e.g. B: 100).

- **Counting speed**

Three different counting speeds can be chosen by CCE 3200. For strongly used notes you should not work in the highest counting speed, because such banknotes properly can't be drawn in correctly under circumstances. By pressure of the "Speed" button you can toggle between the countable speeds 1 or L=low (800 / notes per minute), 2 or M=middle (1,200 / notes per minute) and 3 or H=high (1,500 / notes per minute). Please note, that not all counting speeds are available in all counting modes.

Setting in Setup menu

To open the setup menu, press the button „Setup“ on the panel. With the two arrow buttons you can navigate through the menu. To choose and to select a topic press the button „Restart“. Press "Setup" to leave the sub menus and also the complete setup menu.

- **SPEED (Counting speed)**

Three different counting speeds can be chosen by CCE 3200. For strongly used notes you should not work in the highest counting speed, because such banknotes properly can't be drawn in correctly under circumstances. By pressure of the "Speed" button you can toggle between the countable speeds 1 or L=low (800 / notes per minute), 2 or M=middle (1,200 / notes per minute) and 3 or H=high (1,500 / notes per minute). Please note, that not all counting speeds are available in all counting modes.



- **DATE TIME (Date and Time)**

The date and time will be printed out together with the counting result to the optional thermo printer. In the upper right display area the current time is also shown

DATE FORMAT:

Here you can set the format of the date DD-MM-YY, MM-DD-YY or YY-MM-DD (DD=Day, MM=Month, YY=Year)

DATE SET:

Here you can set the date by pressing the button „+1/+10“. To toggle between the date fields you have to press the arrow buttons. Pressing „Restart“ will save your settings.

TIME SET:

Here you can set the time by pressing the button „+1/+10“. To toggle between the time fields you have to press the arrow buttons. Pressing „Restart“ will save your settings.

- **VERSION (Software Version)**

In this overview all software versions are displayed for the modules of the machine. This information is mainly necessary for service technicians.

- **EXTERN DISPLAY (Optional external display)**

Under this menu you can select which kind of external display (LED or LCD) you have connected to the CCE 3200 to ensure proper data transmission to the display. Please use only by CashConcepts released displays to avoid errors and / or other problems.

Mechanical settings

By transporting and wear of the transport rollers in the hopper area a readjust may be necessary. On the top side of the machine an adjusting screw is located with which the pressure on the notes can be adjusted.

Does the CCE 3200 pull in more than one banknote at once and you got often the error: chained notes or double notes, please turn the adjusting screw by a screwdriver in the direction of the “-“ symbol.

If the notes are poor or skewed drawn in the machine, please turn the adjusting screw by a screwdriver in the direction of the “+“ symbol.

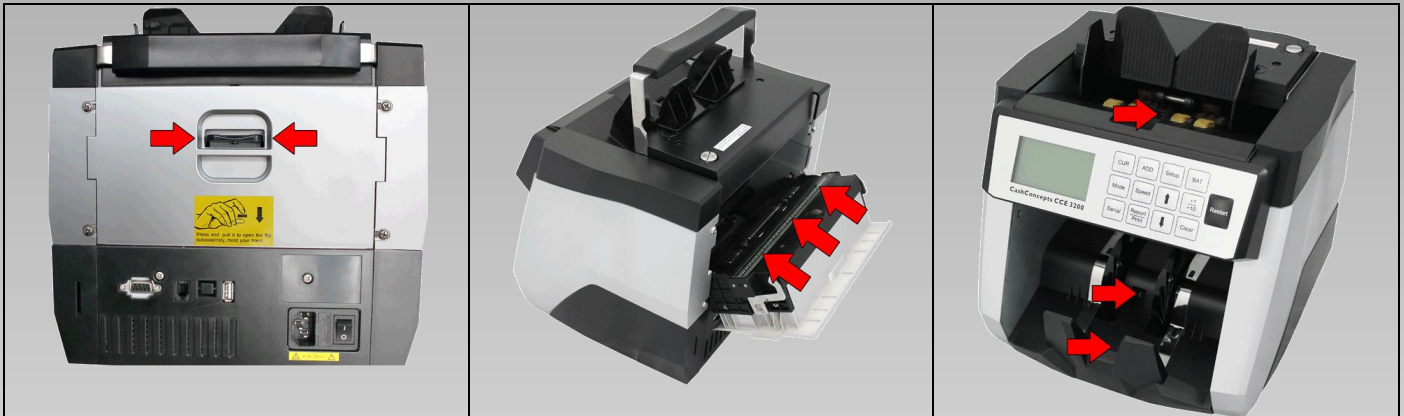
Error management and servicing

The CCE 3200 is equipped with a comprehensive error management to inform you about problems by the counting process and the counterfeit money recognition and also for the soiling of sensors. Please note particular the tips to exclude to the cleaning of the machine to avoid mistakes during the counting caused by dirtied sensors.

Cleaning of the sensors

By the banknotes and by retreating dust it comes to depositions before the sensors of the machine. This pollution leads to increased errors and non-recognitions of real banknotes.

Please, therefore, periodically clean the sensors of the CCE 3200. Turn off the machine and unplug the power cable generally while cleaning the machine.



To open the CCE 3200 press on the back the button of the rear flap to get access to the sensor bars. Use a soft brush and cloth to remove the dust from the sensors, as well as from the feed rollers. To clean the counterfeit sensors we recommend the additional use of a non-flammable compressed air spray, so even in inaccessible places dirt and dust can be removed.

Close the machine after cleaning and plug in the power cable. The CCE 3200 is now ready for counting.



Errors during the counting process

Error-Message	Error	Solution
Denomination different	Different value in sorted counting	Please remove the banknote. If the value is the same as the other notes, please check the security features.
UV Error IR Error Image Error Magnetic Feature fail Cannot Judge Denomination	Counterfeit Error	Please repeat the countable process with the note, the banknote should be inserted in another direction, if the security sign should be partially damaged. If the note is also sorted out furthermore as suspicious it concerns perhaps counterfeit money or security signs are damaged too strongly to be recognized.
Slant notes	Slant notes	Please examine the note / notes and smooth them if necessary. Should these mistakes appear increased please adjust the drawn in pressure of the banknote by the adjustment wheel on the rear side of the machine.
Chained notes	Chained notes	
Double notes	More than one banknote at one drawn in	
Width Error Length Error	Error in size of the banknote	The dimensions of the note does not match with the tested safety features. Please consider the notes for kinks or damage.
Receiver stacker full	Stacker is full	There are more than 220 banknotes in the stacker. Please remove the notes to continue the counting.
Incomplete notes	Banknote is damaged or folded	Please remove the note from the stack to avoid a jam and to prevent further damage to the banknote.

Errors caused by technical problems

Error Message	Solution
Fluorescence sensor	Please check that the top cover is closed correctly. Make sure that the machine is not directly under a bright light or direct light falls through a headlight in the hopper area of the machine, since the sensors are otherwise disturbed.
Banknote feeding sensor Banknote receiving sensor CIS sensor 1 – 4 Left CIS IR sensor / Right CIS IR sensor Left counting sensor / Right counting sensor	Remove the bills and clean the transport way of banknotes and the sensors. Make sure that the machine is not directly under a bright light or direct light falls through a headlight in the hopper area of the machine, since the sensors are otherwise disturbed.
Magnetic B / Magnetic C sensor	Remove the banknotes and clean the magnetic sensors
Rotate Speed Sensor	Clean the conveyor belts of the device, as well as the code wheel of the rotate speed sensor. If this does not solve the error, contact your service partner.
Internal Memory Fault	Please contact your service partner.

Replacing the fuse

The CCE 3200 is protected by a fuse which can be exchanged by you without big expenditure in case of need.

Please switch off the machine before the change of the fuse and pull the net plug from the device. There is mortal danger on the basis of electric shocks by nonobservance.

Draw off the cover of the fuse and exchange it with an equivalent one. The fastener of the fuse must be pressed after the change again firmly.

Scope of delivery

Contained accessories	Optional available
Manual	Cleaning kit
Power cord	External display
	Update cable
	Thermo printer
	SD card

Technical specification

Hopper/Stacker size:	300 / 200 banknotes
Power connection:	AC 100 V ~ 240 V – 50/60 Hz
Power consumption:	max. 60 W
Operating temperature:	0°C – 40°C
Air humidity:	40 – 90 %
Dimensions:	271 x 254 x 284 mm
Weight:	7.5 kg
Counting speed:	800 / 1.000 / 1.500 notes / minute

Contact

If it should once have problems with your CCE 3200 which you can not solve with the help of this manual, then please get in contact to us by email and describe the problem, we will get in contact to you as soon as possible with a proposal for solution for the problem.

info@cce-team.com

Please retain your purchase documents for warranty claims. Do not remove, cover, damage or modify in any way the sticker with serial number on the underside of the unit, otherwise you forfeit your warranty. You will find this manual also in other languages on our website www.cce.tm under the topic "FAQ" for free downloading