

C690LJ

Label Inkjet Printer

User Manual



GoDEX

Contents

- 1. Installing the driver in MS Windows 3
- 2. Getting the printer ready for operation 5
 - 2.1. Connecting the power supply unit 5
 - 2.2. Installing the print heads 6
 - 2.3. Installing the ink cartridges..... 9
 - 2.4. Initialization 10
- 3. Preparing for the first label print job 10
 - 3.1. Installing labels with gaps..... 10
- 4. Toolbox functions 12
 - 4.1. Connection 12
 - 4.2. Print settings 13
 - 4.3. Media control 16
 - 4.4. Service menu 17
 - 4.5. Lines on printout 19
 - 4.6. Ink status..... 19
 - 4.7. Print medium status 20
 - 4.8. Printer ID 20
 - 4.9. Error details 21
 - 4.10. About Toolbox..... 21

1. Installing the driver in MS Windows

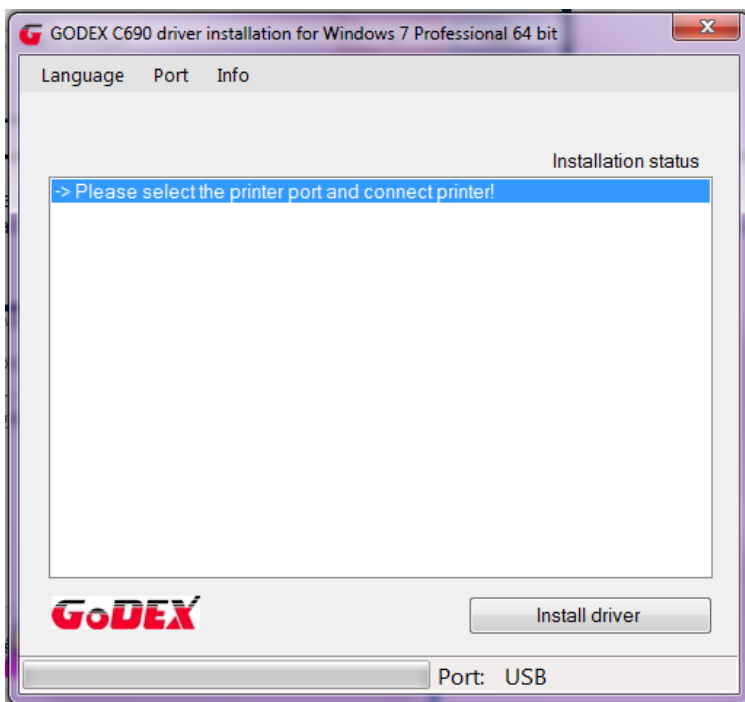
This section guides you through the driver installation. Please follow the instructions below. **Please make sure to FIRST complete the installation on your computer and THEN connect the printer.**

1. Download the driver from our website or insert the driver CD in your CD/DVD drive. Double-click the button setup.exe file to run it.

DE.resx	11.02.2016 09:08	RESX-Datei	48 KB
driver_files_extract_32.msi	29.02.2016 10:24	Windows Installer...	11.025 KB
driver_files_extract_64.msi	29.02.2016 10:25	Windows Installer...	11.853 KB
EN.resx	11.02.2016 09:08	RESX-Datei	47 KB
setup.exe	29.02.2016 10:30	Anwendung	226 KB

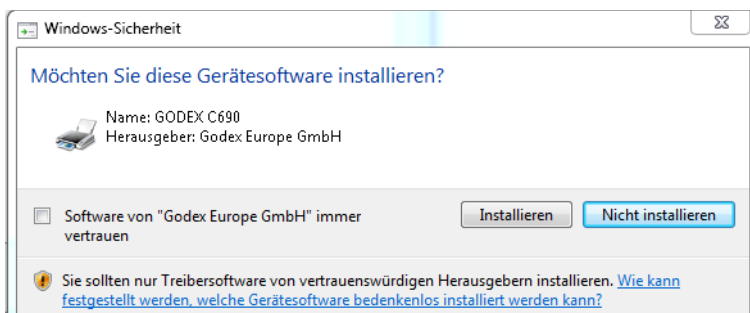
2. Depending on the settings of your operating system, you may be prompted to install the driver. Click "Yes" to continue with the installation.

3. The driver installation setup wizard opens. Click "Install driver" to confirm.



4. Follow the instructions on the screen and click "Next" to confirm.

5. Important: Another dialogue opens – Windows Security (Only install driver software from trusted manufacturers).



6. Click "Install" to confirm and continue with the driver installation.

7. The necessary files are unpacked and copied to your computer. This may take a few minutes.

8. Click "Finish" to continue with the installation.

9. Now connect the printer with the host computer. Once they are connected, the computer should detect and automatically install the printer.

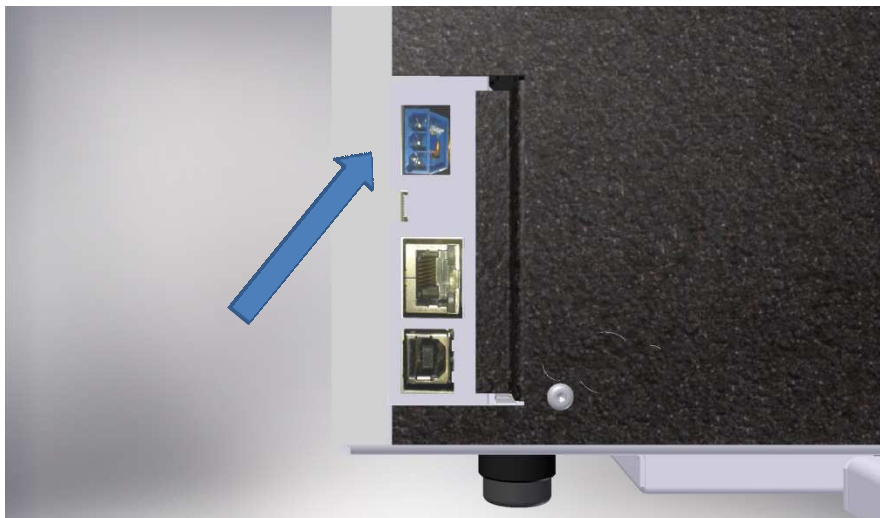


10. Click "Close" to complete the installation. The printer is now ready for use.

2. Getting the printer ready for operation

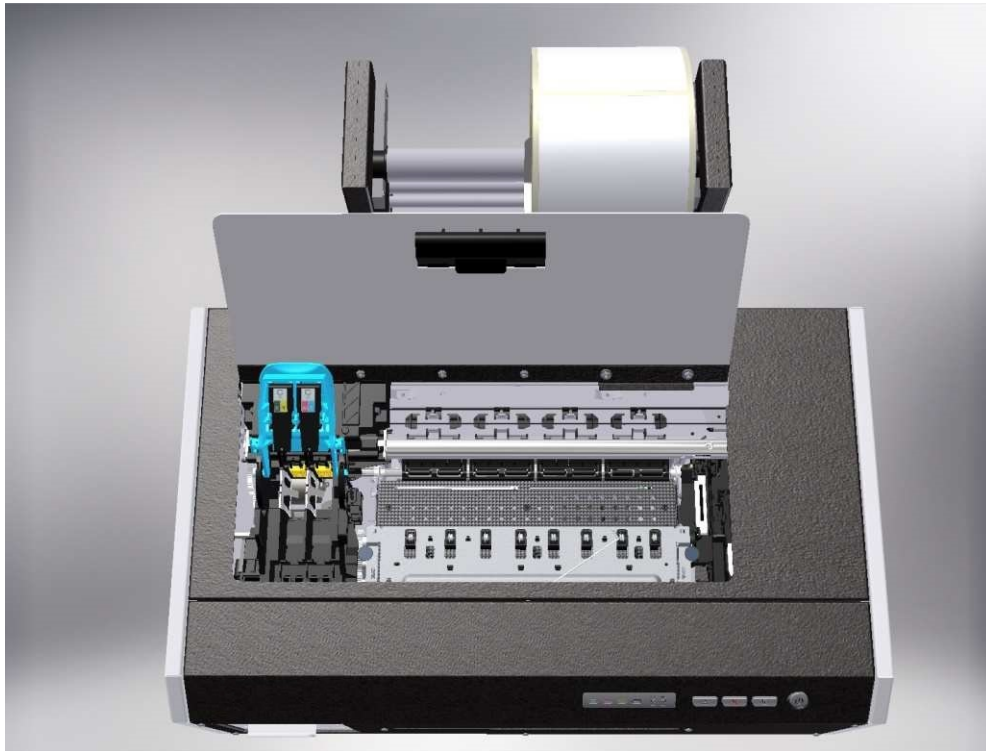
2.1. Connecting the power supply unit

The connection panel is located at the back of the printer on the left. Connect the blue plug of the power supply unit to the top jack. Once the power supply unit is connected to the mains, switch on the printer.

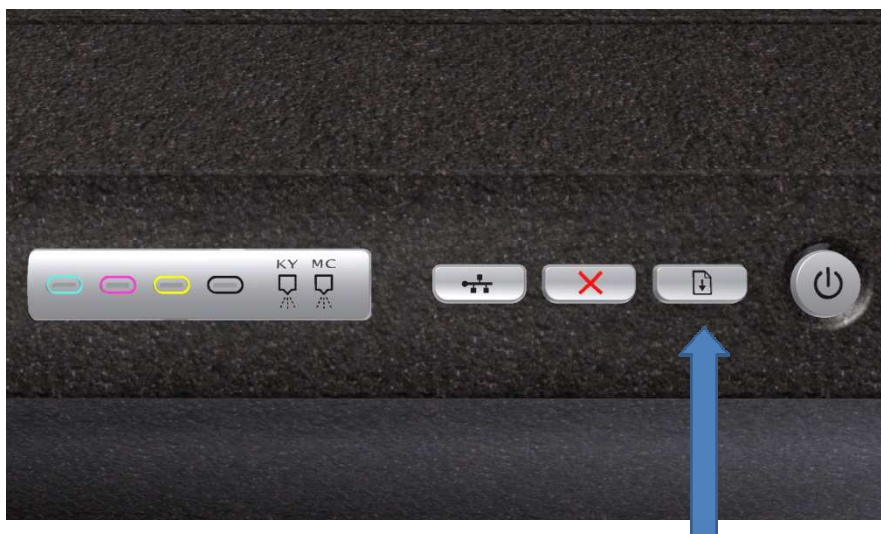


2.2. Installing the print heads

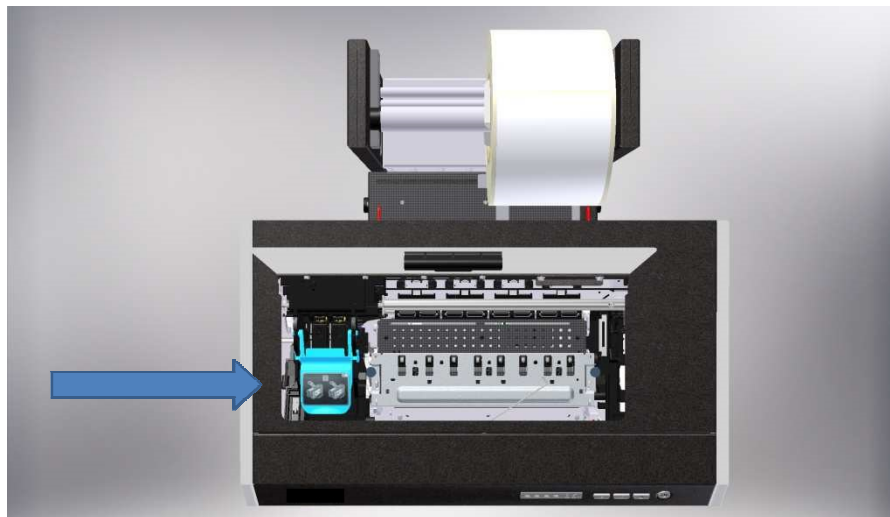
Open the printer cover....



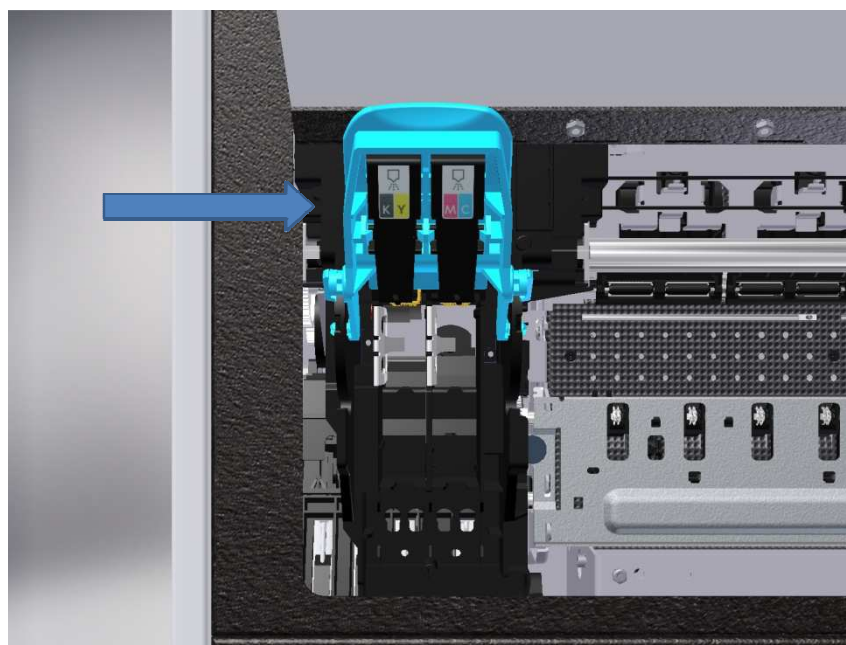
... press the Feed button and keep it press...



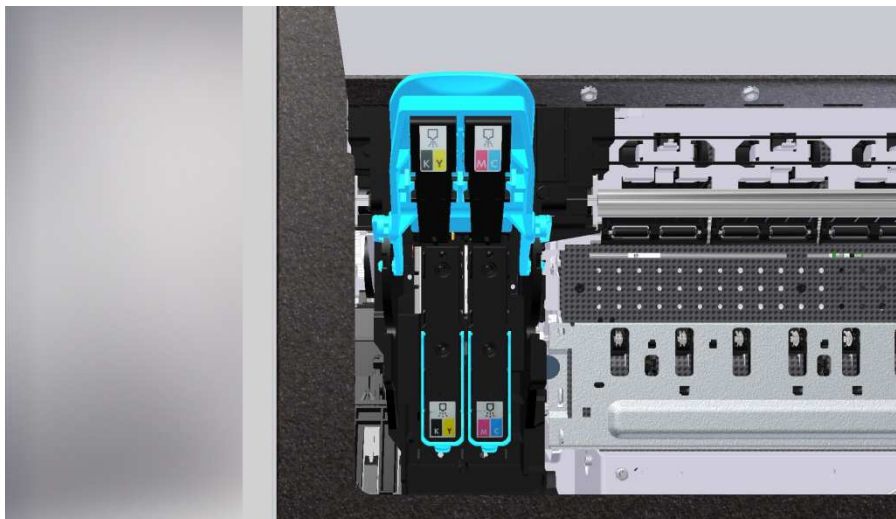
... until the print head carriage has moved to the far left (service position) and stops.



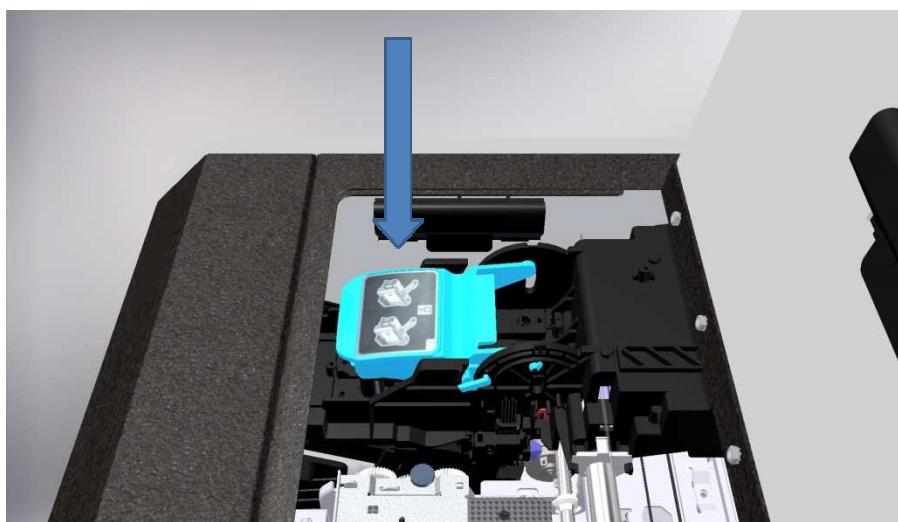
Lift the print head release lever.



Then install the two print heads. "KY" is for black and yellow, "MC" for magenta and cyan.
Please make sure you read the instructions included with the print heads.



Lower the print head release lever and close the printer cover.



2.3 Installing the ink cartridges

To install the ink cartridges, open the cover of the ink cartridge compartment fully.



Now install the cartridges in the correct slots. Each slot is marked with the respective colour. The arrow on the cartridge has to point downwards.

Please make sure you read the instructions included with the ink cartridges.



2.4. Initialization

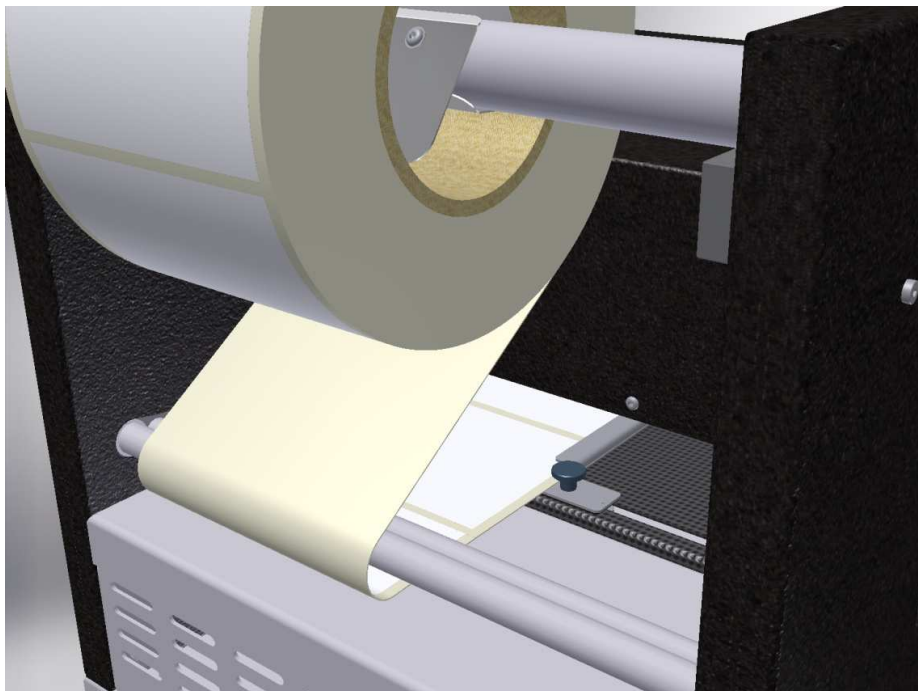
Once you have installed the print heads and ink cartridges, the printer will start initialisation. This is a fully automatic process that will run every time you change the print heads or ink cartridges.

Please wait with any other actions until the printer has completed initialisation and stopped making any sounds.

3. Preparing for the first label print job

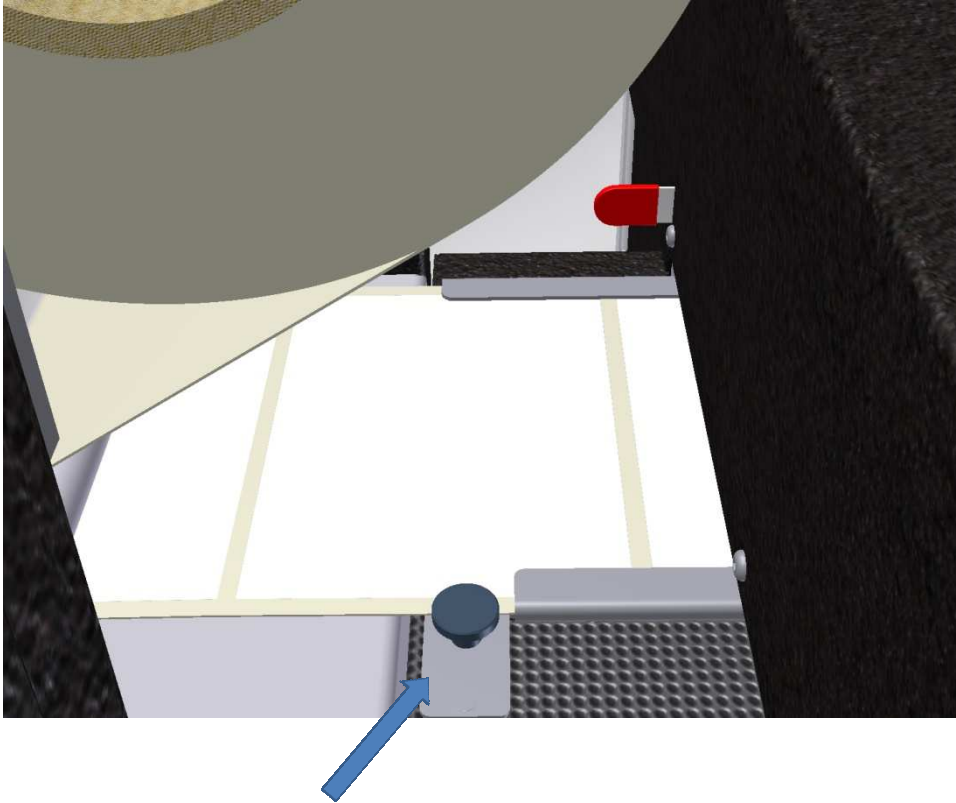
3.1. Installing labels with gaps

Install the label roll on the supply hub as shown and feed the label stock through the printer. The labels should be flush with the fixed label guide on the left.

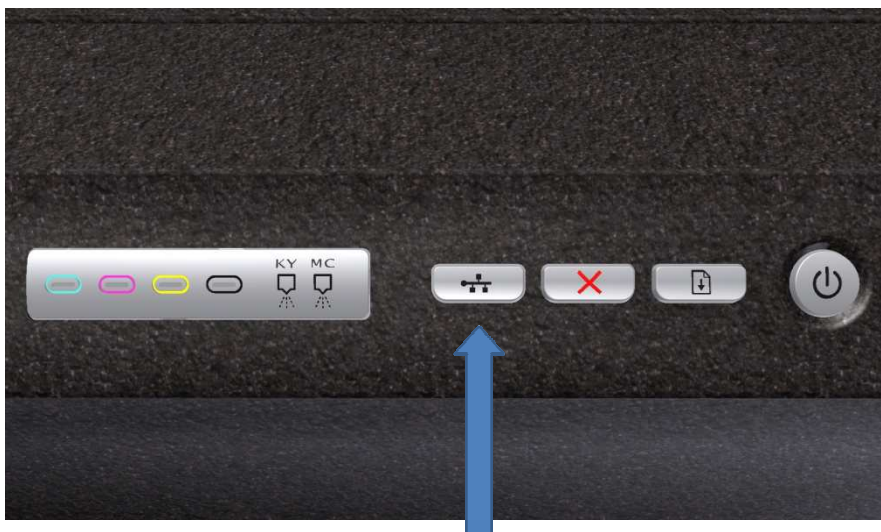


Move the adjustable label guide on the right up to the label stock and secure the guide with the **screw**. The label guides should hold the label stock securely without squashing the liner. The labels should move through the feeder easily and without creasing.

Gently push the label stock to the feed point (first resistance felt).



Press the "Load / Unload" button. The printer will start to pull in the labels and feed them up to the print position. The tension of the label stock indicates that the label stock has been successfully loaded. The printer is now ready for operation.



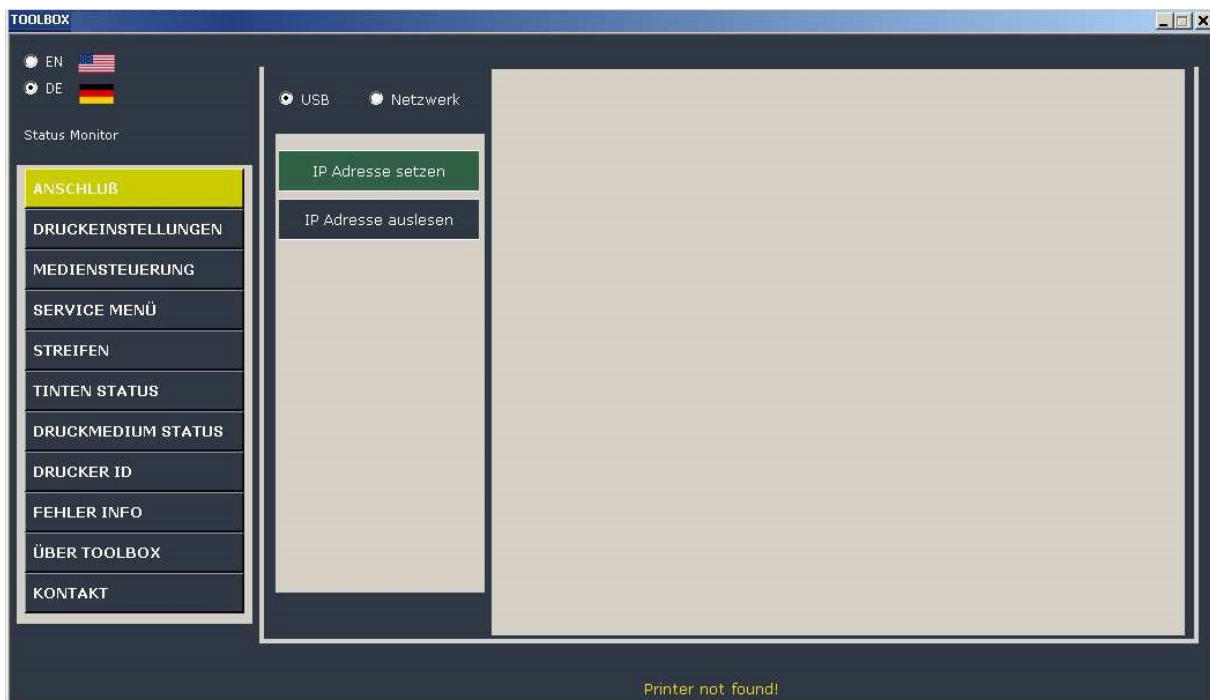
Note: Alternatively, you can carry out the steps described here in the Toolbox. You can read about the Toolbox functions in Section 4 of this user manual. However, inappropriate Toolbox settings may interfere with the functions described here, so the printer may not respond as specified.

4. Toolbox functions

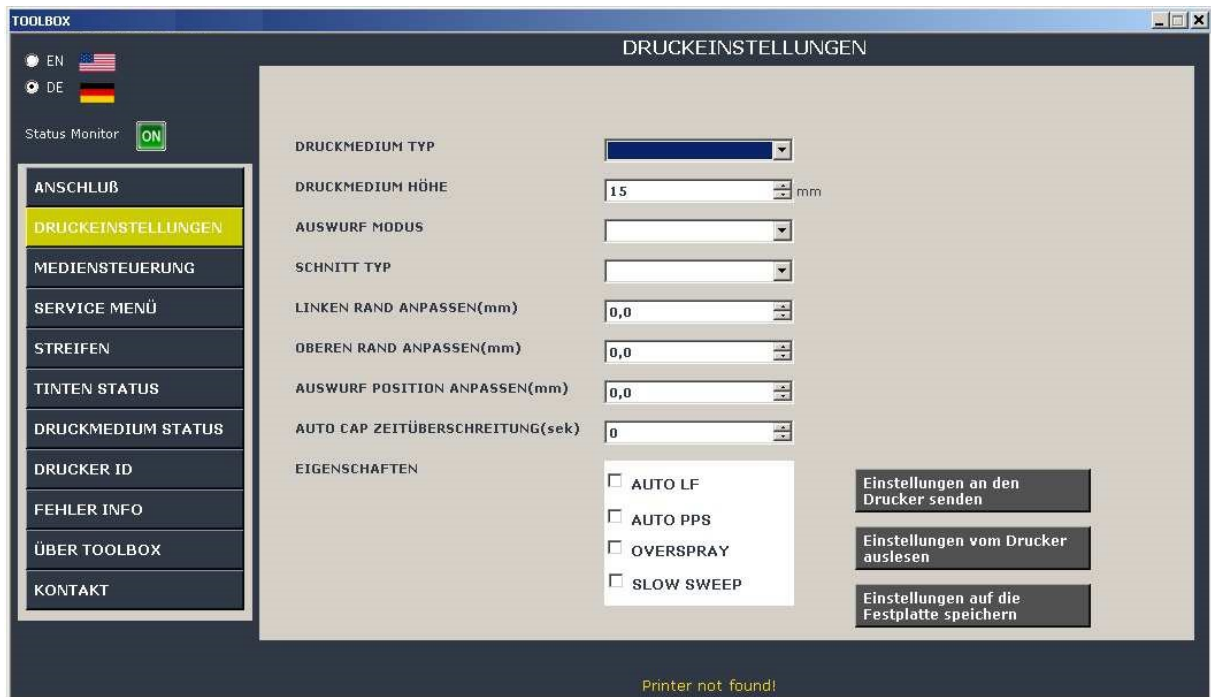
The Toolbox has a number of functions for changing the printer settings. It also lets you access printer maintenance functions and provides status information about the consumables.

(Please note that this image of the Toolbox is for illustration only. The final version will look a little different, though it will have the same scope of functionality.)

4.1. Connection



4.2 Print Settings



1. Print medium type:

- Labels with gaps
- Labels with black marks
- Z-fold / continuous print medium
- Cut sheets

2. Print medium height:

When using a continuous print medium or cut sheets, the maximum height setting is 300 mm. This value defines the cutting position and the position of the tear bar.

3. Eject mode:

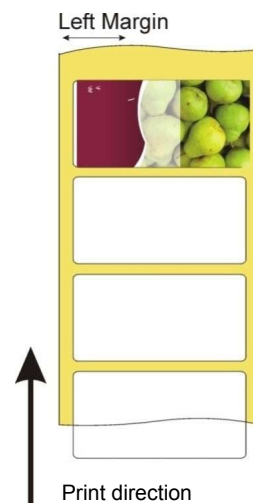
- After each label: With this setting, the label stock is cut after each printed label.
- After job: With this setting, the label stock is cut after the print job is complete.
- Continuous: With this setting, the printer will complete a print job, printing one label after the other. Where several print jobs have been sent to the printer, they are processed without a pause in between.

4. **Cut type:**

- Manual tear bar: With this setting, labels have to be torn off or removed manually.

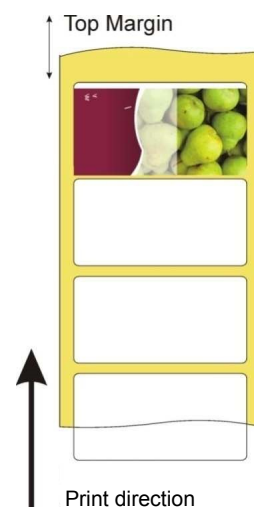
5. **Adjust left margin (mm):**

Use this setting to prevent white margins on your labels. If a white margin is visible on the left or right of the label, enter a positive or negative value to correct it. In the example shown on the right, you would enter a negative value to move the printed image on the label to the left. You may need to repeat this step until you have reached the desired position of the printout.



6. **Adjust top margin (mm):**

Use this setting to prevent white margins on your labels. If a white margin is visible at the top or bottom of the label, enter a positive or negative value to correct it. In the example shown on the right, you would enter a negative value to move the printed image on the label upwards. You may need to repeat this step until you have reached the desired position of the printout.



7. **Adjust eject position (mm):**

Sometimes a label gap may not be positioned precisely at the tear bar. In such a case, you can also enter positive or negative values to adjust the label position. Positive values will move the labels backward (into the printer), negative values will move them forward (out of the printer).

8. **Auto cap timeout (sec):**

The print head is closed automatically after 5 seconds in "Ready" status. You can edit this interval as required.

9. **Properties:**

- **AUTO LF:**

With this option enabled, the printer will automatically carry out an LF calibration before starting a print job.

With the option disabled, the calibration must be carried out manually when the message "LF calibration error" is displayed.

We recommend leaving this option enabled.

- **AUTO PPS:**

With this option enabled, the printer will automatically adjust the distance between the print head and the medium before starting a print job.

With the option disabled, the distance between the print head and the medium is always the same.

- **OVERSPRAY:**

With this option disabled, the printer will only print to the bottom of the current label if the print template is not within the scanned label height.

With the option enabled, the printer will print across the following gap if the print template is not within the scanned label height.

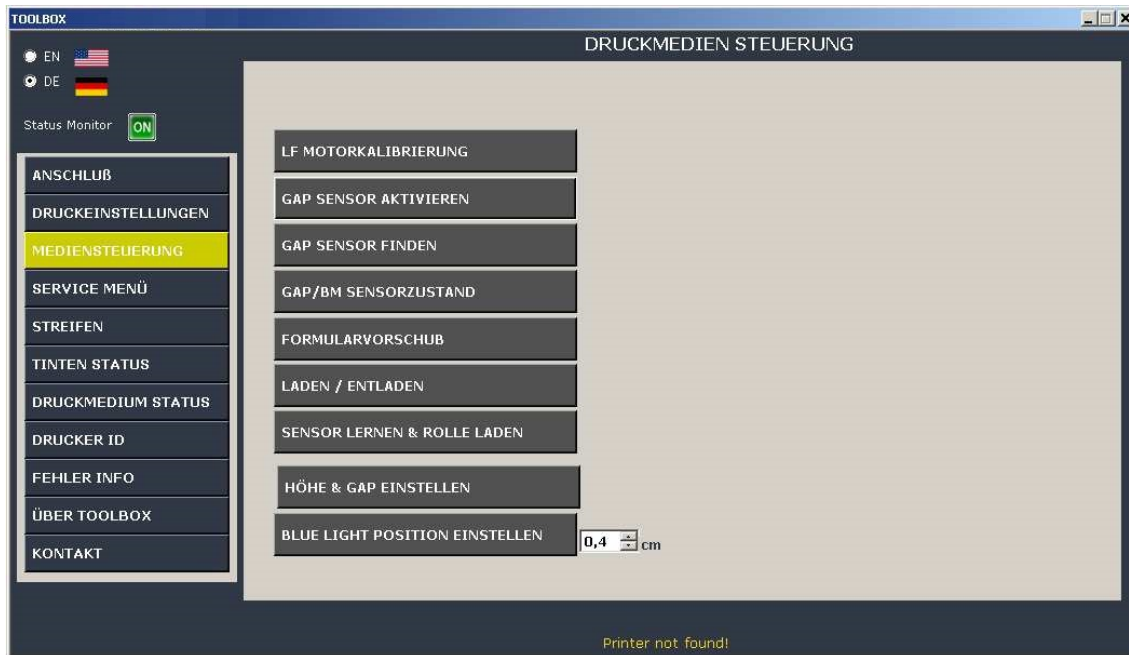
- **SLOW SWEEP:**

With this option enabled (slow print mode), the print head will always print at the same speed.

With the option disabled, the print head will print at different speeds, depending on the print mode selected.

To confirm any changes made to options 1- 9, please make sure you click the "Send settings to printer" button. Otherwise the printer will not apply these settings!

4.3. Media control



1. LF Motor calibration:

Use this button if the "Auto mode" is disabled in the settings and the printer displays the message "LF motor calibration error".

2. Enable gap sensor:

Use this command if the gap sensor values stored in the printer have been lost and the printer does not detect the gaps during printing.

3. Find gap sensor:

Use this command to detect the exact position of the gap sensor.

4. GAP/BM sensor status:

Displays the current status of the gap/black mark sensor.

5. Form feed:

Click this button to feed one label, if required.

6. Load/Unload:

Load or unload the label stock.

7. Teach sensor & load roll:

When installing a new label roll, we recommend teaching the sensor to ensure it detects the precise start position.

8. Set height & gap:

If the height and gaps of the current medium are not the same as the scanned values, update them to the current values.

9. Set blue light position:

The printer uses the default position for the blue light sensor to detect the top end of the print medium. You can edit this position here, if required.

Follow the instructions on the screen.

4.4. Service menu



10. Calibrate print head:

This option guides you through the adjustment of the print heads. You may need to adjust the print heads if the printout is blurred or after you have changed a print head. Follow the instructions on the screen.

11. Calibrate line feed:

Lets you calibrate the line feed. You need to calibrate the line feed on the printer if there are alternate dark and light lines in a colour image or dotted lines across the printout. Follow the instructions on the screen.

12. Close print head:

Use this command to lock the print head release lever.

13. Open print head:

Use this command to unlock the print head release lever.

14. Number of pages:

Displays the total number of printed pages/labels.

15. Clean print head:

Click for instructions on cleaning the print heads. When printed characters are incomplete or dots and lines are missing on a printout, the inkjet nozzles may be blocked. In such a case, you will need to clean the print heads. Follow the instructions on the screen.

Light/Medium/Thorough

The Toolbox offers three cleaning levels for the print heads. If white lines appear in your printouts, start with "Light". If the lines persist after this light cleaning procedure, run "Medium" cleaning. "Thorough" cleaning should be used in **emergencies only. If used too frequently, the print head may be damaged.**

16. Print a diagnostic page:

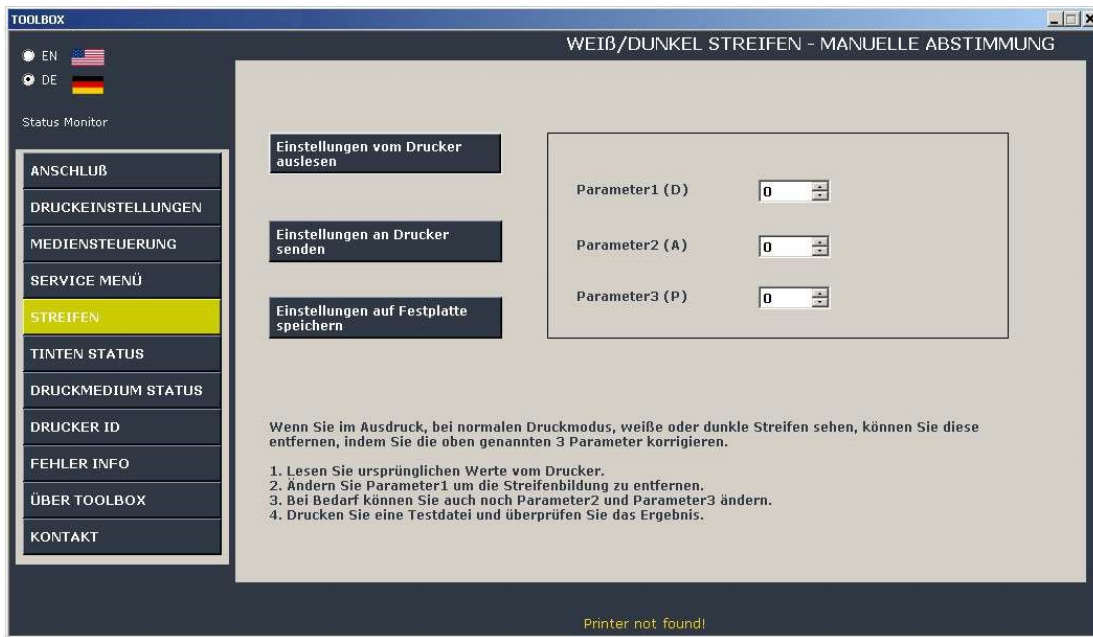
Lets you print a diagnostic page for the printer. This contains information about the printer and the consumables.

Report type:

- Self-test
- Tech info
- Need diagnostic
- Ink supply report
- Nozzle pattern

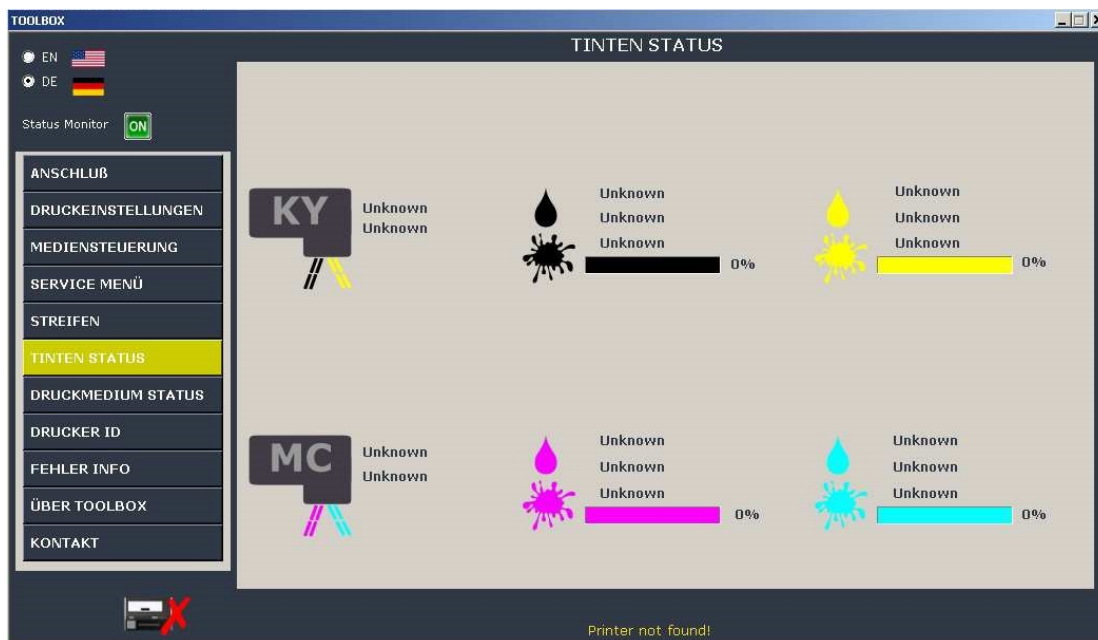
17. Send print file

4.5. Lines



You can correct white or dark lines on the printout in normal print mode by adjusting the three above parameters.

4.6 Ink Status



4.7 Print medium status

TOOLBOX

EN DE

Status Monitor ON

ANSCHLUß
DRUCKEINSTELLUNGEN
MEDIENSTEUERUNG
SERVICE MENÜ
STREIFEN
TINTEN STATUS
DRUCKMEDIUM STATUS
DRUCKER ID
FEHLER INFO
ÜBER TOOLBOX
KONTAKT

DRUCKMEDIEN STATUS

SENSOR LERN STATUS	None
DRUCKMEDIUM EINGELEGT	Unknown
DRUCKMEDIUM ZUSTAND	Unknown
MULTI-GRÖSSE DRUCKMEDIUM	Unknown
DRUCKMEDIUM AM AUSGANG	Unknown
DRUCKMEDIUM HÖHE	Unknown
GAP/BM BREITE	Unknown

Printer not found!

4.8 Printer ID

TOOLBOX

EN DE

Status Monitor ON

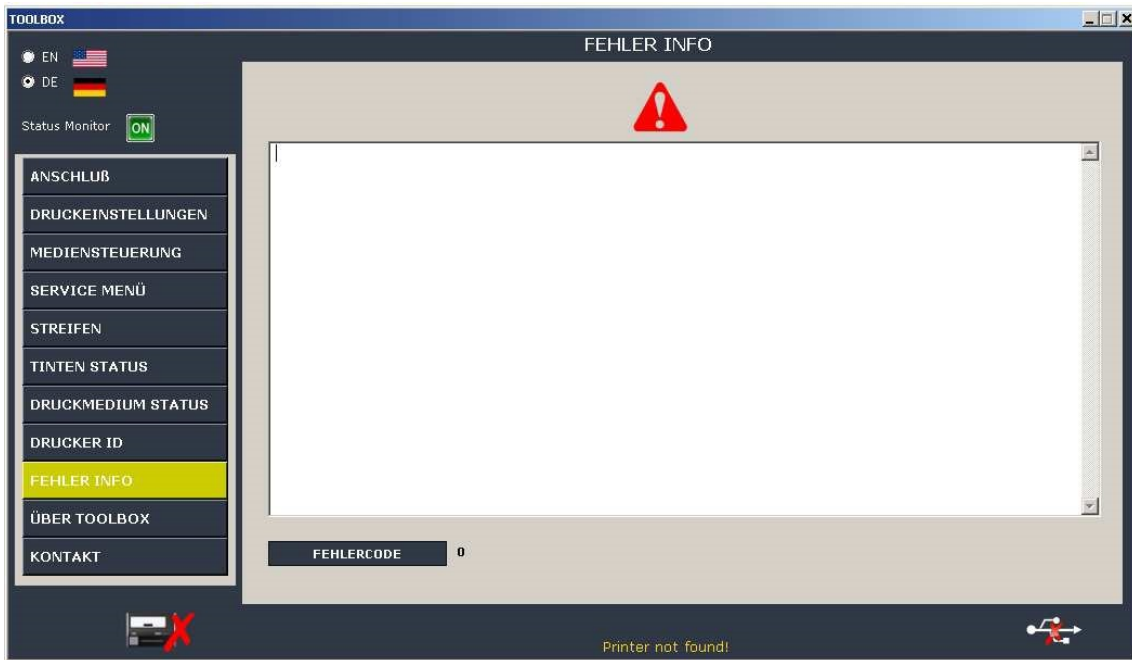
ANSCHLUß
DRUCKEINSTELLUNGEN
MEDIENSTEUERUNG
SERVICE MENÜ
STREIFEN
TINTEN STATUS
DRUCKMEDIUM STATUS
DRUCKER ID
FEHLER INFO
ÜBER TOOLBOX
KONTAKT

DRUCKER ID

HERSTELLER	NONE
MODELLNAME	NONE
MODELLNUMMER	NONE
SERIENNUMMER	NONE
FIRMWARE VERSION	NONE
TINTEMODELL	NONE

Printer not found!

4.9. Error Details



4.10. About Toolbox

Click for information about the Toolbox version.

